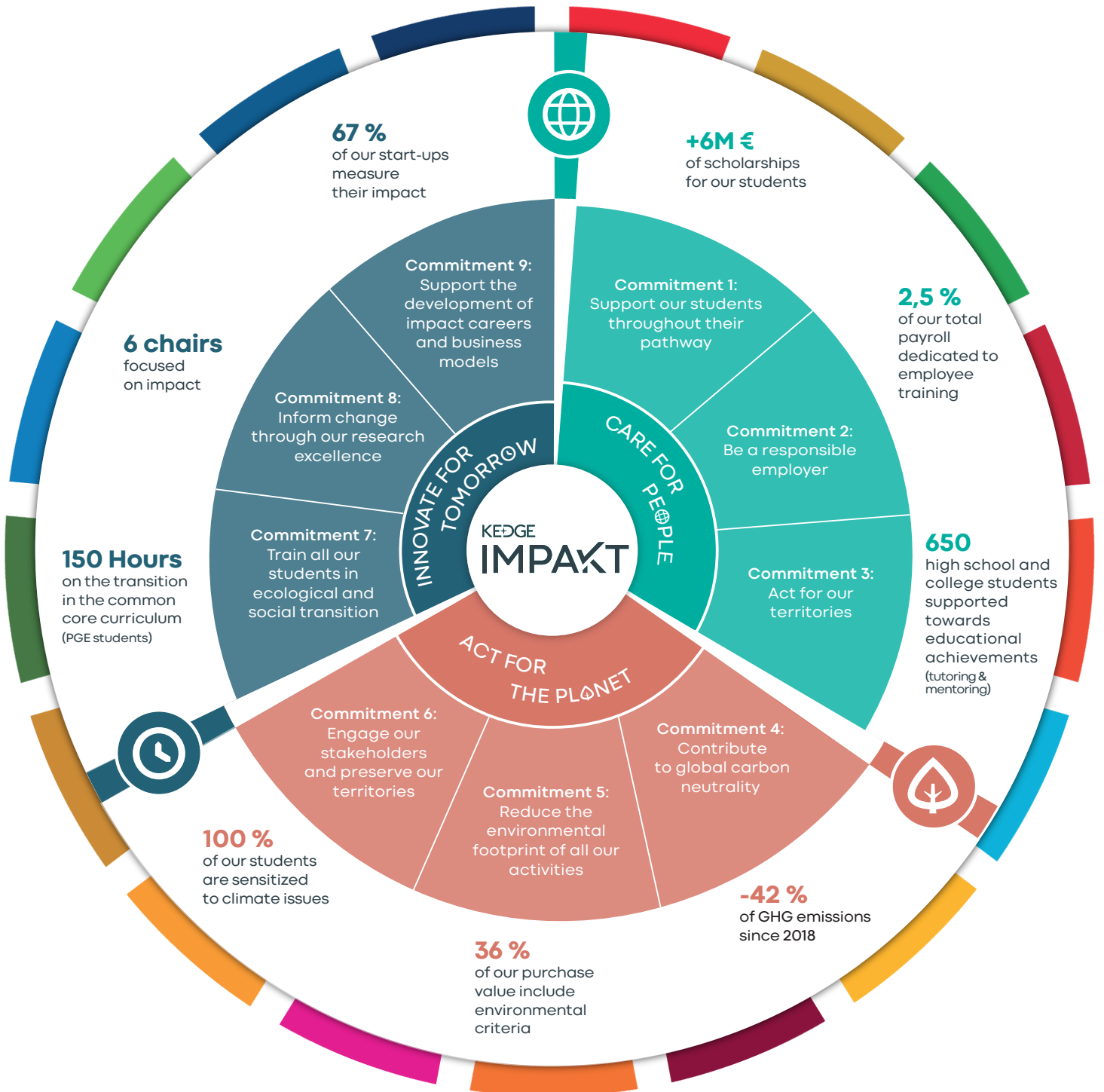


THE STRATEGY KEDGE IMPACT



Referential and label



our commitments to train responsible managers and accelerate the ecological and social transition

In light of the social, environmental and economic challenges we are currently facing, it is time to rethink our way of understanding the world, of thinking and acting in it. Addressing these interdependent challenges requires a systematic approach, with active contributions from all parties and organisations. As a higher education establishment with 14,800 students, it is our duty to train and equip change makers, capable of building a desirable future.

Committed to a CSR approach since 2007, we are convinced that sound knowledge and training are prerequisites to action. This is why ecological and social transition is at the core of our mission.



CARE FOR PEOPLE - COMMITTING TO A MORE INCLUSIVE SOCIETY

Our goal: Allow the potential of each and every person to blossom and be fulfilled, regardless of their social, territorial, gender or disability background.

Our commitments:

- **Support our students throughout their pathway**, by providing facilities for their mental, physical and financial health and by combating discrimination;
- **Be a responsible employer**, aiming for professional equality and ensuring employee development through training;
- **Act for our territories**, through providing equal opportunities and contributing to local development and public interest.



ACT FOR THE PLANET - ACTING TO PROTECT THE CLIMATE AND BIODIVERSITY

Our obligation: Be consistent and exemplary on our campuses, in all our activities and on our territories, to contribute to the change of behaviour and practices

Our commitments:

- **Contribute to global carbon neutrality**, through sobriety and residual emissions' offsetting;
- **Reduce the environmental footprint of all our activities**, by managing our impacts and making responsible purchasing our standard;
- **Engage our stakeholders and preserve our territories** by raising awareness and restoring biodiversity.



INNOVATE FOR TOMORROW - REINVENTING OUR CORE BUSINESS TO ACCELERATE ECOLOGICAL AND SOCIAL TRANSITION

Our mission: Prepare our students to meet the challenges of the 21st century by passing on the knowledge, know-how and skills to shape tomorrow.

Our commitments:

- **Train all our students in ecological and social transition**, through a common foundation and powerful specialisation pathways;
- **Inform change through our research excellence**, our academic output and our thematic and sectoral expertise;
- **Support the development of impact careers and business models**, by engaging and collaborating with our alumni network, our partner companies and our incubators.